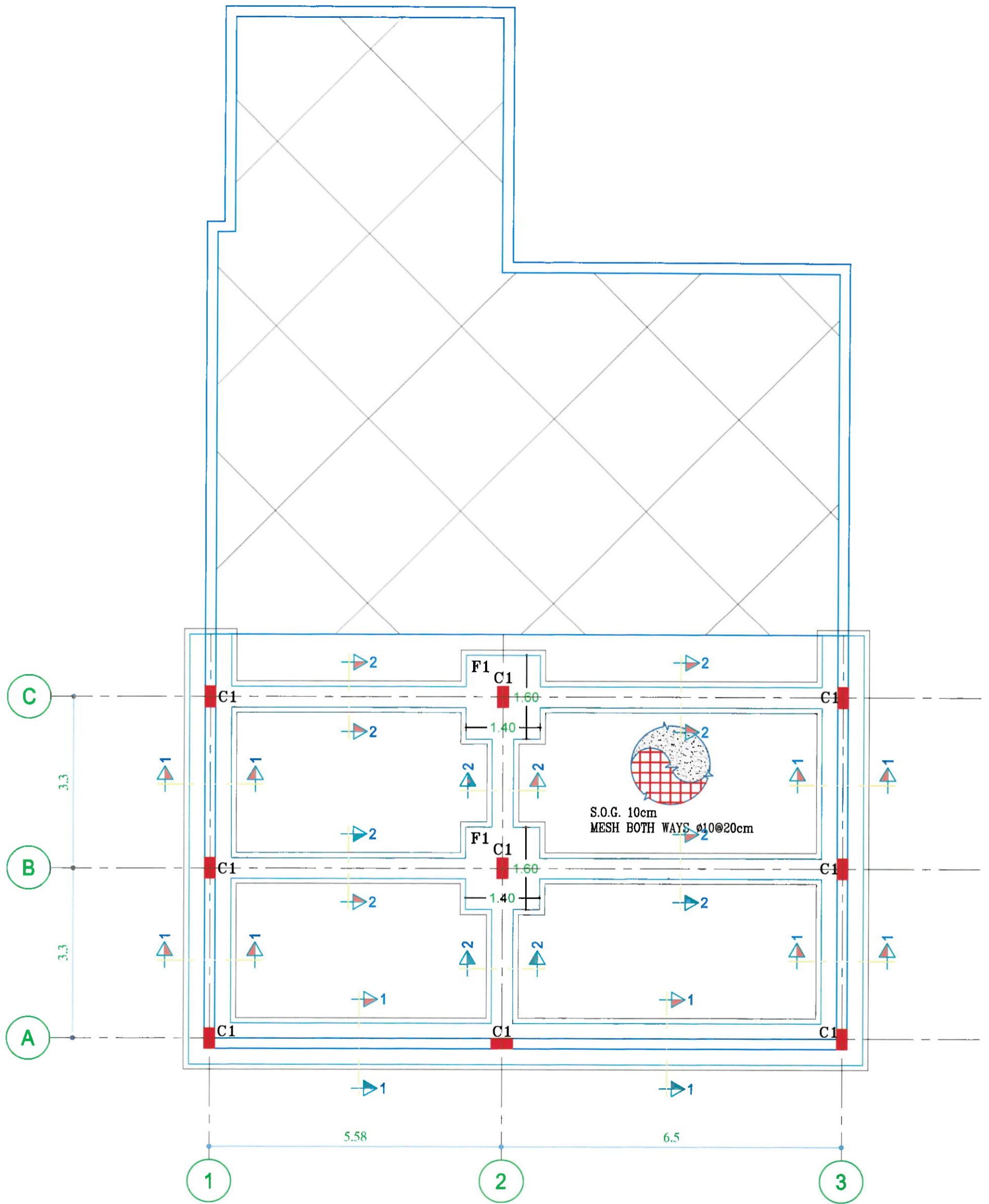
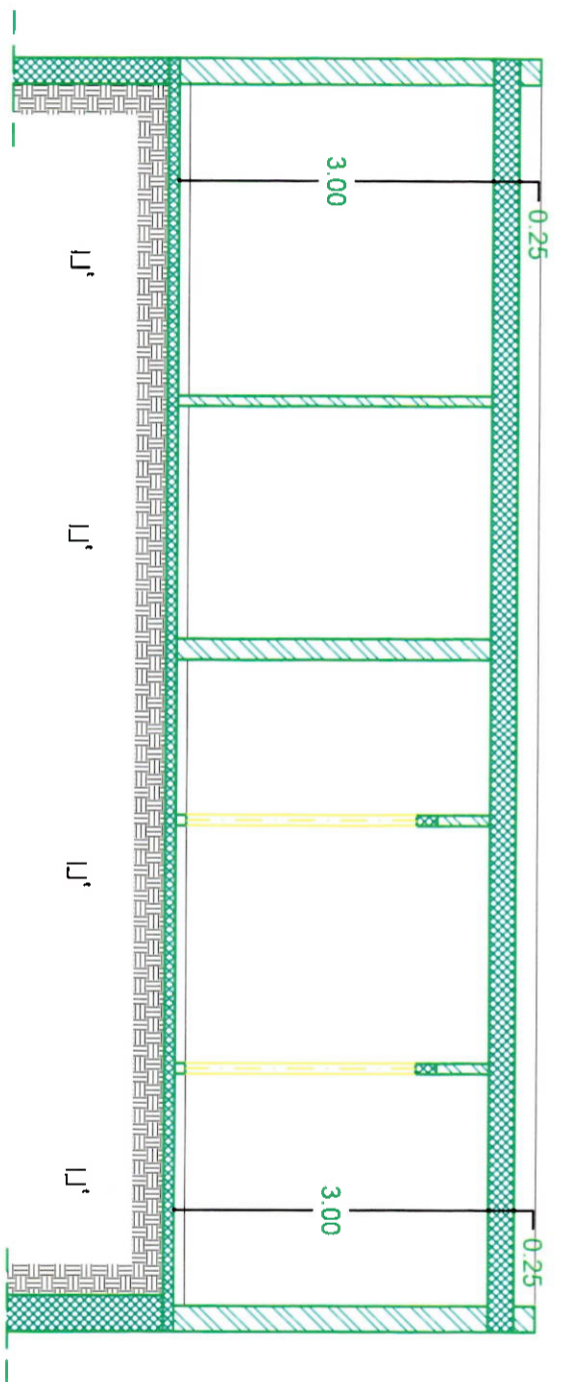
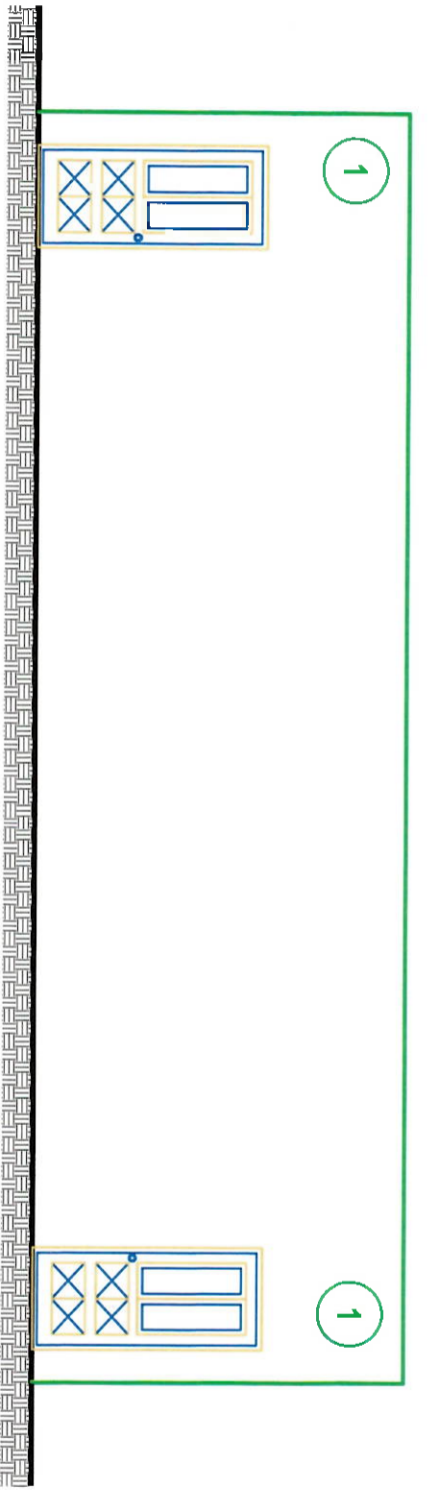


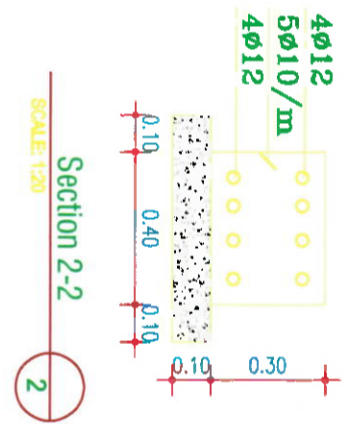
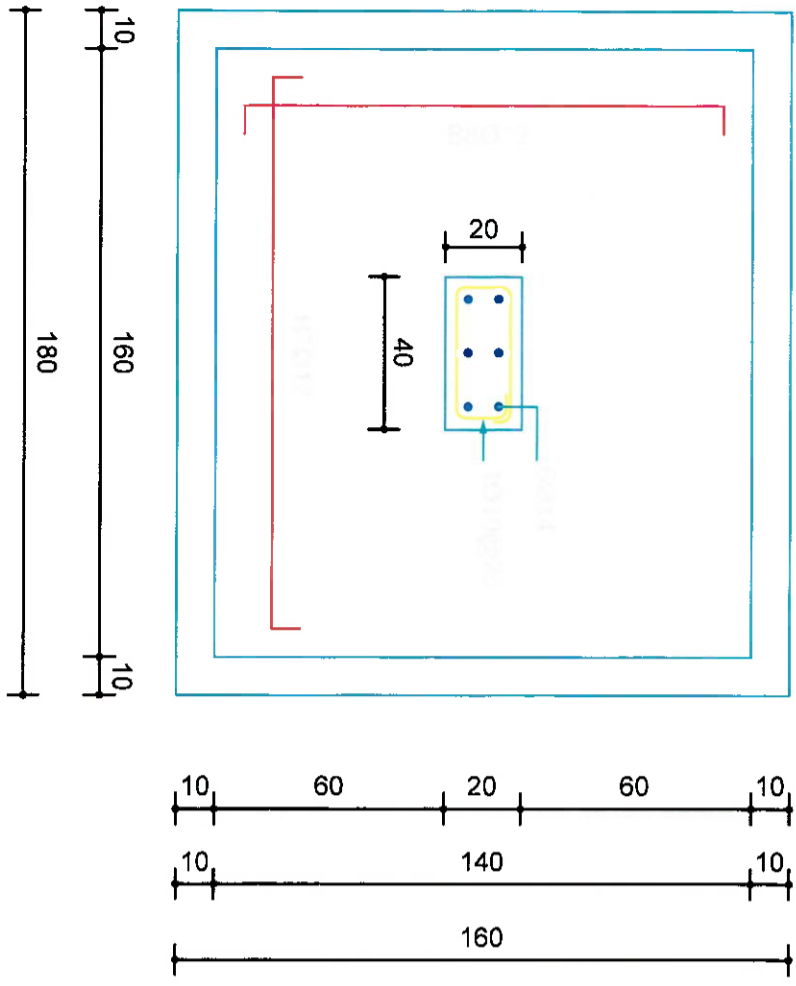
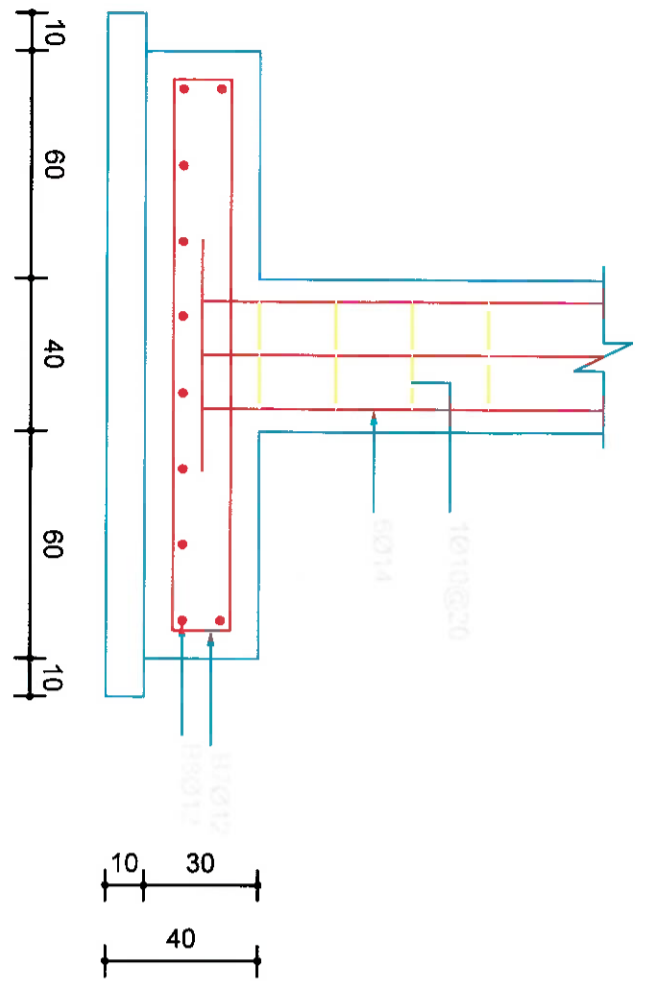
الوحدات المحيية - مركز خدمات المدينة  
البلدية



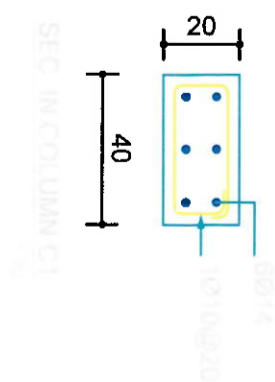
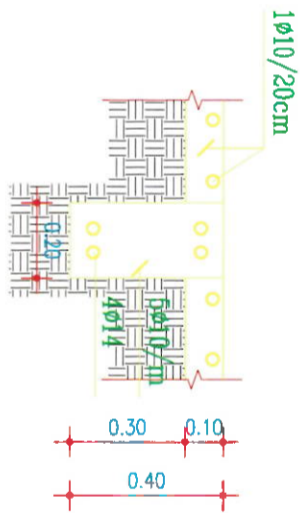


A-A

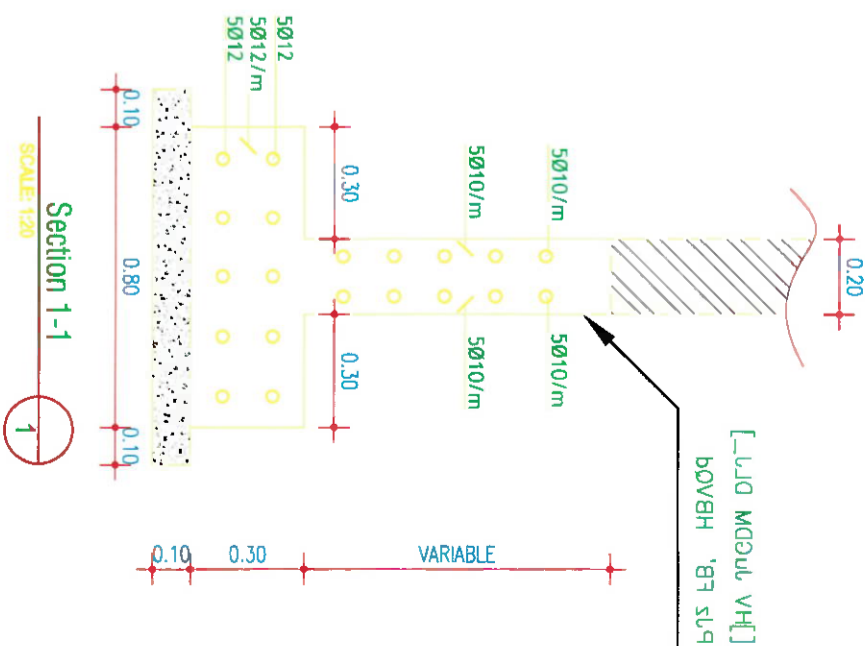
1-100



Section 2-2  
SCALE 1:20

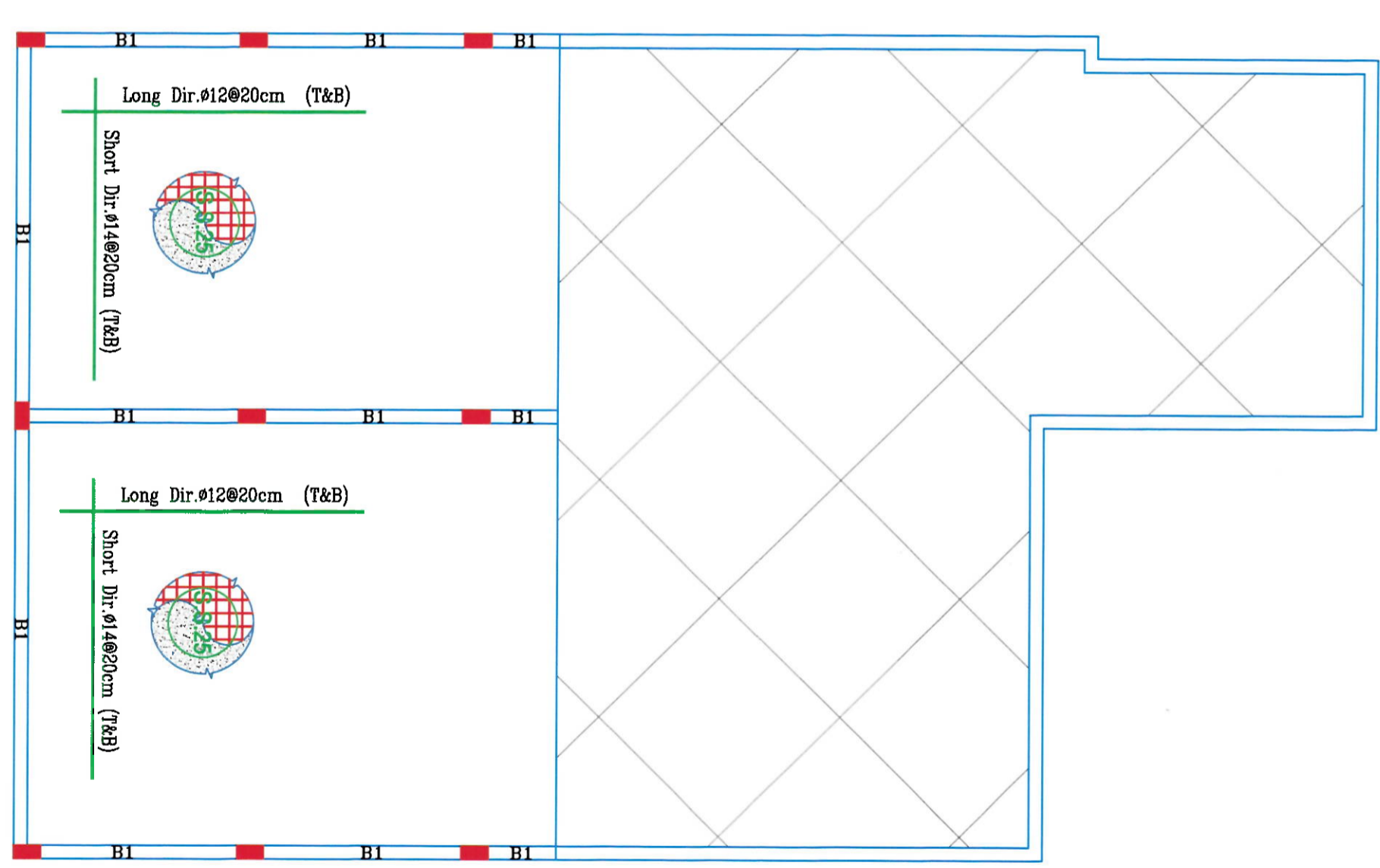
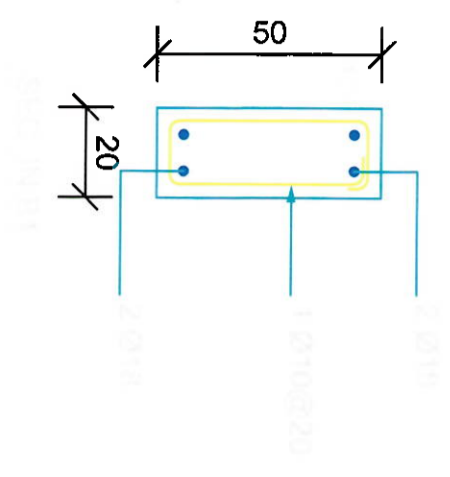


Section 1-1  
SCALE 1:20



Section 1-1  
SCALE 1:20





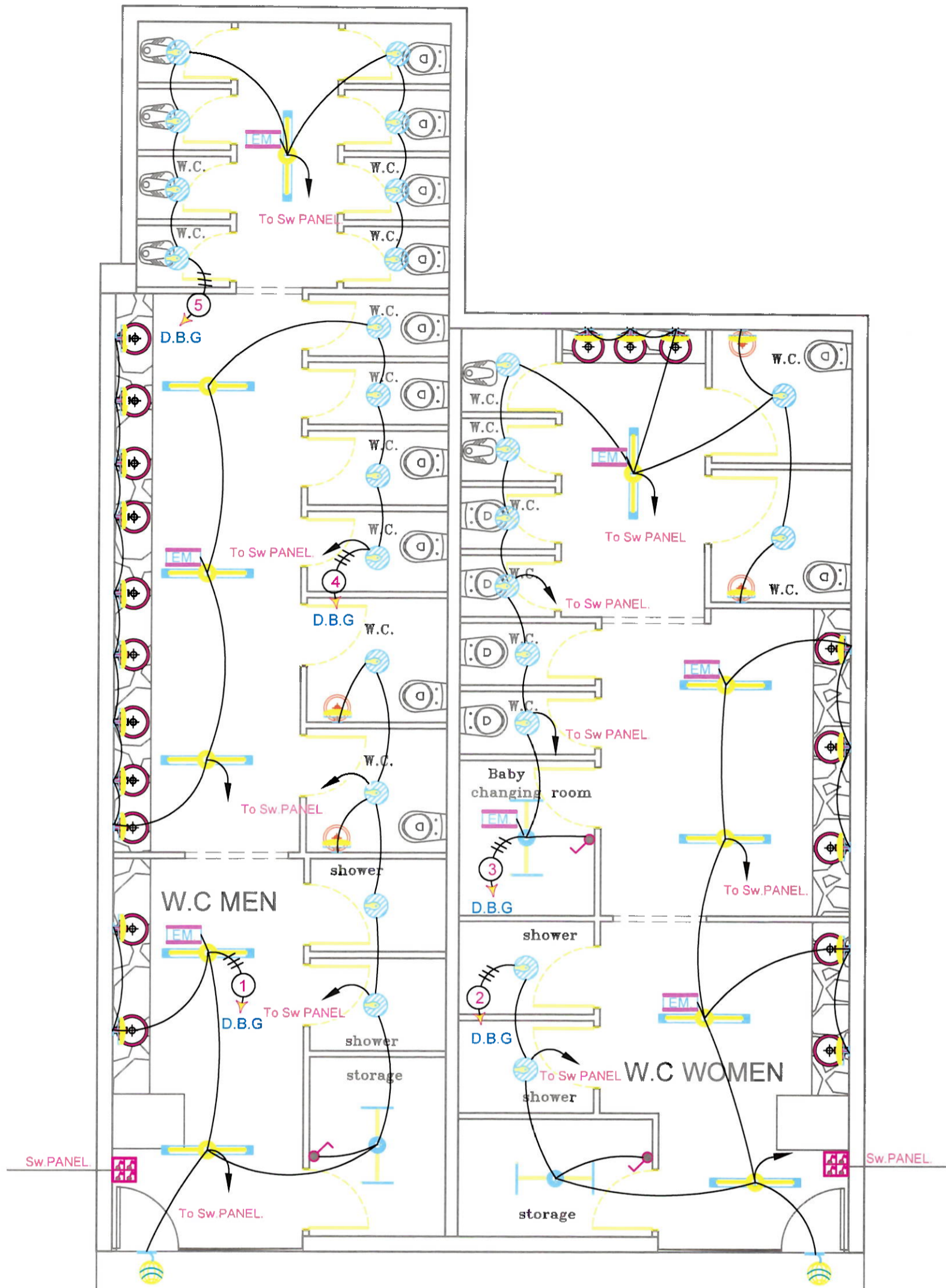
## ELEC. SYMBOLS Fixture Schedule

SYMBOL	DESCRIPTION
	16A DOUBLE POLE SWITCH WITH PILOT LAMP, FOR E.W.H
	10A WALL/CEILING MOUNTED DOUBLE POLE SWITCH, FOR EX. FAN WITH FAN SYMBOL
	10A, ONE GANG - , TWO GANG, THREE GANG ONE WAY SWITCH.
	10A, ONE GANG - , TWO GANG - TWO WAY SWITCH.
	10A, INTERMEDIATE SWITCH.
	16A DOUBLE POLE SWITCH WITH PILOT LAMP, FOR A.C.
	LIGHTING SWITCH PANEL
	3-POLE, 13AMP. SWITCHED SOCKET OUTLET, WITH PILOT LIGHT.
	3-POLE, 16amp. SWITCHED SOCKET OUTLET , IP-54.
	2- GANG, 3-POLE, 13AMP. SWITCHED SOCKET OUTLET, WITH PILOT LIGHT.
	3-POLE, 13amp. SWITCHED SOCKET OUTLET, WITH PILOT LIGHT,IP 54 (H:130cm)
	2- GANG, 3-POLE, 16amp. SWITCHED SOCKET OUTLET, WITH PILOT LIGHT, IP-54.
	20A DOUBLE POLE SWITCH WITH PILOT LAMP/CEILING MOUNTED TELEPHONE SOCKET OUTLET (R111).
	T.V. AND SATELLITE SYSTEM SOCKET OUTLET
	ELECTRIC WATER HEATER (SEE MECH. DWG. FOR DET. & SPECIFICATION).
	SPN, ISOLATING SWITCH, IP-65 (FOR RATING REFER TO DRAWINGS).
	TPN, ISOLATING SWITCH, IP-54 (FOR RATING REFER TO DRAWINGS).
	RJ45 DATA SOCKET OUTLET
	SPECIAL OUTLET FOR A/C UNIT.
	EXHAUST FAN OUTLET
	Main Distribution Board.
	MOTOR CONTROL CENTER.
	FINAL DISTRIBUTION BOARD (DB)
	Main Telephone Terminal Box.
	Sub Main Telephone Terminal Box
	ELECTRICAL POWER MANHOLE 80cmx80cmx120cm
	LOW CURRENT SYSTEMS MANHOLE 60cmx60cmx60cm.

Note:-

- \* ALL Switches to be fixed at height 125cm from F.F.L. unless the switches beside beds at height 70cm from F.F.L.
- \* ALL Socket Outlets to be fixed at height 35cm from F.F.L. unless the following outlet
- \* Sockets in the Kitchen.
- \* Sockets for general use to be fixed at height 110cm from F.F.L. Sockets for freezer and refrigerator to be fixed at height 150cm .

SYMBOL	DESCRIPTION
	STAIR CASE LIGHT SQUARE SHAPE LED LIGHT 10W
	36W SURFACE MOUNTED LED LIGHTING FIXTURE WITH OPAL DIFFUSER ,IP20 Light Efficiency=7200LM,Input voltage:85~265V AC Dimension: 600*1200*9mm
	36W SURFACE MOUNTED LED LIGHTING FIXTURE BUTTIN TYPE ,IP54 Input voltage:85~265V AC Dimension:300*1200*9mm
	72W SURFACE MOUNTED LED LIGHTING FIXTURE BUTTIN TYPE ,IP54 Light Efficiency=7200LM,Input voltage:85~265V AC Dimension: 600*1200*9mm
	72W SURFACE MOUNTED LED LIGHTING FIXTURE BUTTIN TYPE ,IP44 Light Efficiency=7200LM,Input voltage:85~265V AC Dimension: 600*1200*9mm
	Wall Mounted Bulkhead Luminaire with Wire Guard Galvani. Steel & Cast Aluminium Body 60W GLS Lamp,IP54.
	Wall mounted led light fixture IP54, with 30w. lamp, & decorative black. aluminium arm with base IP30
	Wall mounted led light fixture IP54, with 30w. lamp, & decorative black. aluminium arm with base IP65.
	36W SURFACE MOUNTED LED LIGHTING FIXTURE BUTTIN TYPE ,IP20 BUTTIN TYPE ,IP20,Light Efficiency=3600LM Input voltage:85~265V AC Dimension:300*1200*9mm
	72W SURFACE MOUNTED LED LIGHTING FIXTURE BUTTIN TYPE ,IP20 Light Efficiency=7200LM,Input voltage:85~265V AC Dimension: 600*1200*9mm
	48 W SURFACE MOUNTED LED LIGHTING FIXTURE WITH LOUVER ,IP20 Light Efficiency=4800LM,Input voltage:85~265V AC Dimension:600*600mm - 5000K
	36 W SURFACE MOUNTED LED LIGHTING FIXTURE WITH LOUVER ,IP20 Light Efficiency=3600LM,Input voltage:85~265V AC Dimension:600*600mm - 3500K
	IP65, surface mounted light,round ceiling led 15 watt for bathroom light Lamp Luminous Flux(lm):1100 LM IP Rating: IP65 waterproof Dimension: #200x20mm
	SURFACE MOUNTED ROUND SHAPE LED SPOT LIGHT 24W Light Efficiency=1920LM, Input voltage:85~265V AC Dimension: #300x20mm, IP30
	SURFACE MOUNTED ROUND SHAPE LED SPOT LIGHT 18W Light Efficiency=1440LM, Input voltage:85~265V AC Dimension: #225x20mm IP30
	SURFACE MOUNTED ROUND SHAPE LED SPOT LIGHT 18W Light Efficiency=1440LM, Input voltage:85~265V AC Dimension: #225x20mm IP44
	24W LED LIGHT RECESSED IN SLAB- IP 54 (WATER PROOF)
	LED LIGHTING FIXTURE 7W WALL MOUNTED ABOVE SINK MIRROR PLY OPAL GLASS WHITE DIE CAST ALUMINIUM FILTER , IP44
	1x8W LED SELF CONTAINED LIGHTING FIXTURE WITH BATTERIES FOR 3 HOURS MAIN SUPPLY FAILURE.
	Dicho, But Non-Maintained Exit Sing.
	WALL MOUNTED ,RECESSED LIGHT FIXTUR(10W) LED High brightness Luminous Flux 1m:1000 IP Rate IP65
	WALL MOUNTED ,RECESSED LIGHT FIXTUR(10W) LED High brightness Luminous Flux 1m:1000 IP Rate IP20
	W-PROOF EXTERNAL LIGHTING FITTING WITH 10W LED LAMP AND Globe with Polycarbonate Body 0 30cm.
	Flood light, pole top mounted 80W ,IP65 , H : 6m
	ELEC. POINT FOR SIGN H: 300cm FROM F.F.L.



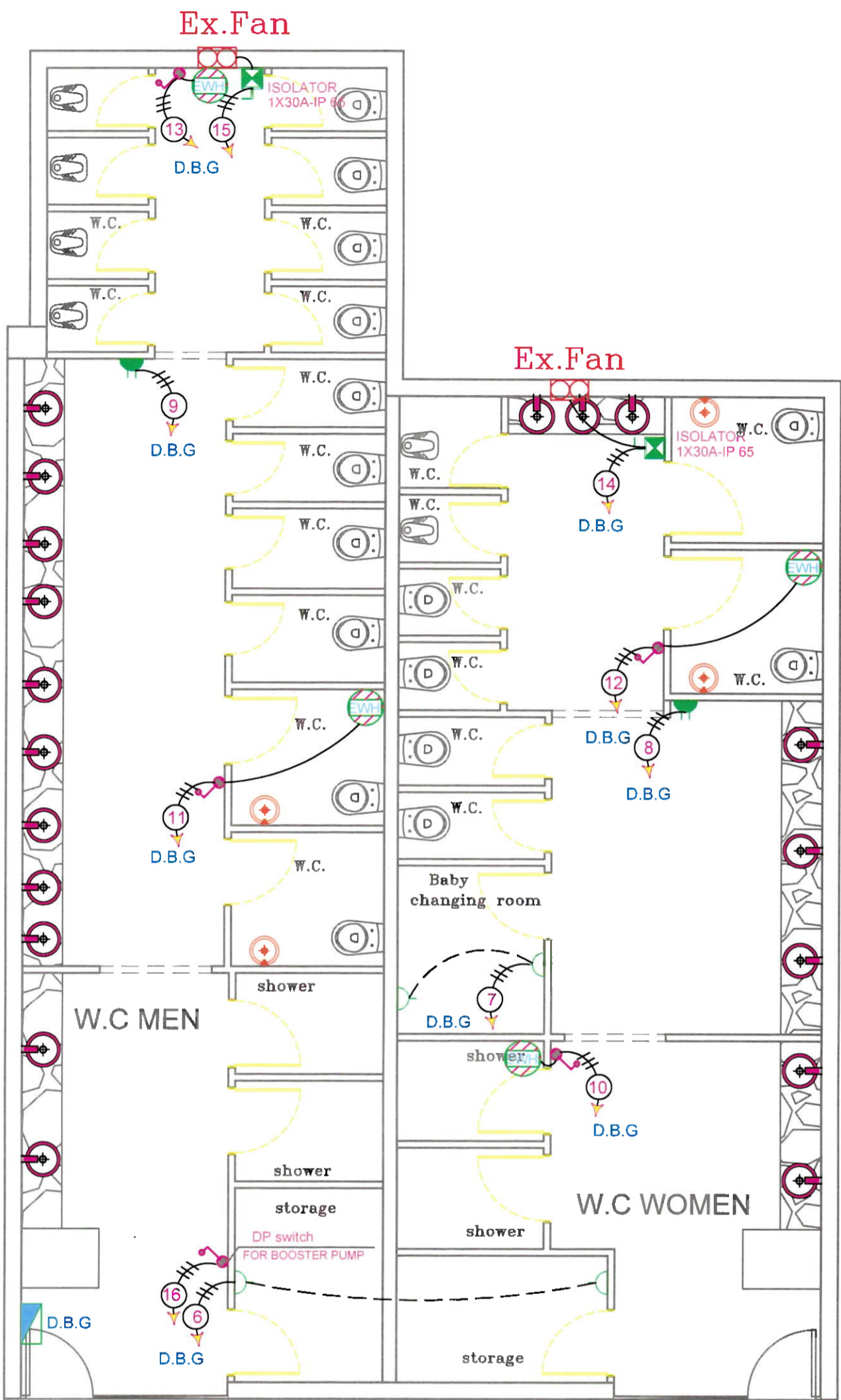




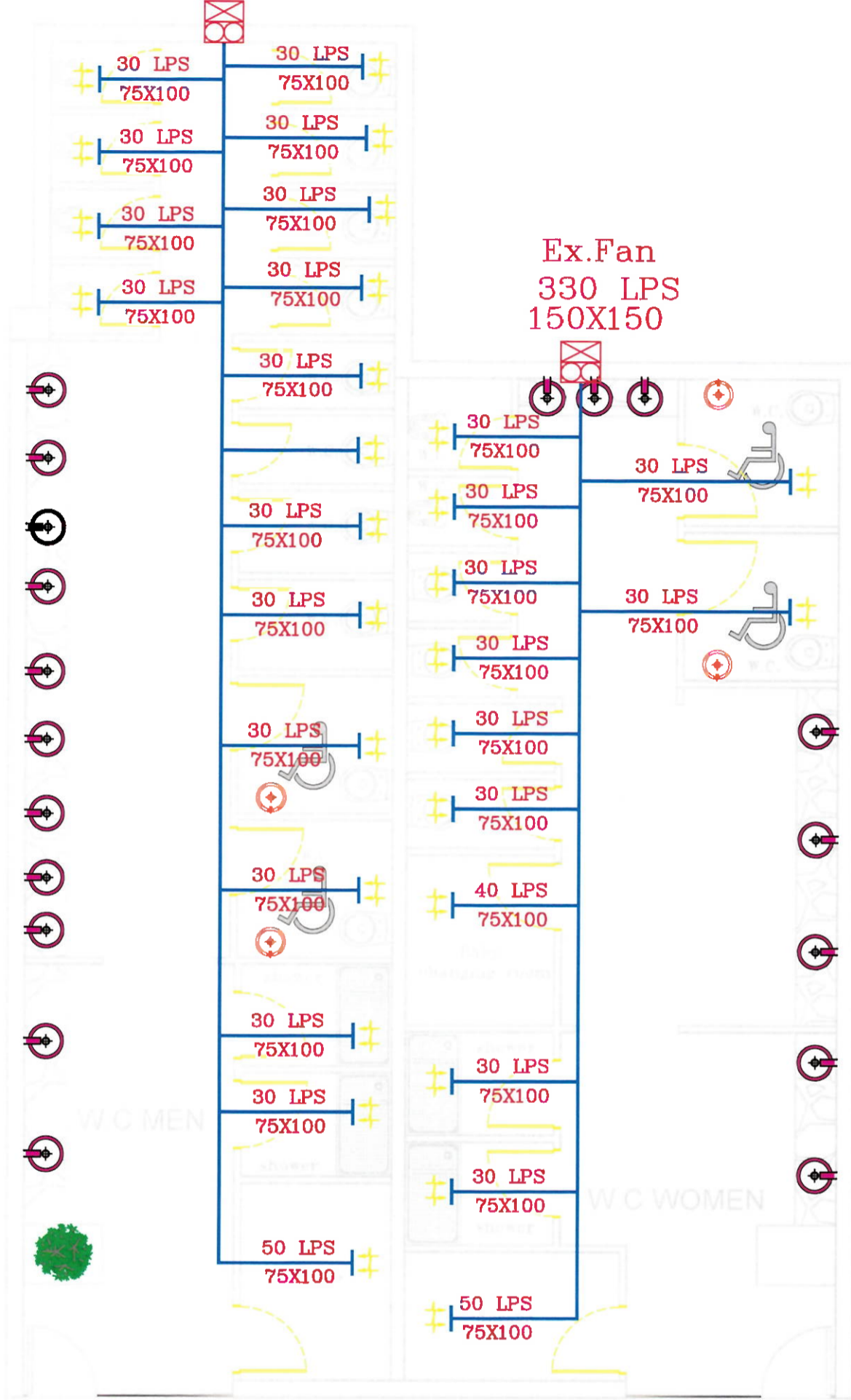
MAIN BREAKER	ISOLATOR	3x100A	BOARD SIZE	TPN 18 WAY
PANEL REF.	D.B.G		FEEDER SIZE	CU/XLPE/PVC CABLE 5x6mm <sup>2</sup>
LOCATION	GROUND		SUPPLY FROM	EX...M.D.B.
VOLTAGE & FREQ	3PHASE,400/230V-50HZ		RACE WAY TYPE	38mm PVC CONDUIT

TYPE OF LOAD	WIRE SIZE mm <sup>2</sup>	COND SIZE mm	PHASE LOAD WATT			TRIPING RATE	R	Y	B	PHASE LOAD WATT			COND WIRE SIZE mm <sup>2</sup>	TYPE OF LOAD
			R	Y	B					R	Y	B		
LIGHTING	2.5		150			10A	10A	10A	250			2.5	LIGHTING	
LIGHTING	2.5			200		10A	10A	10A		200		2.5	LIGHTING	
LIGHTING	2.5				200	10A	10A	10A			500	4.0	SOCKETS	
SOCKETS	4.0		500			20A	20A	20A	500			4.0	SOCKETS	
SOCKETS	4.0			500		20A	20A	20A		1500		4.0	E.W.H	
E.W.H	4.0				1500	20A	20A	20A			1500	4.0	E.W.H	
E.W.H	4.0		1500			20A	20A	20A	350			4.0	FAN	
FAN	4.0			550		20A	20A	20A		300		4.0	PUMP	
SPARE	/					20A	20A	20A				/	SPARE	
PHASE TOTAL (\$W)			3250	3250	3700									

DISCR.	LIGHTING	SOCKETS	OTHER	TOTAL	PANEL CURRENT
	WATT	WATT	WATT	WATT	A
CONNECTED LOAD WATT	1000	2000	7200	10200	
DEM. FACT	0.9	0.75	1.0		
DEMAND LOAD WATT	900	1500	7200	9600	16.3



Ex.Fan  
530 LPS  
200X250



Ex.Fan  
330 LPS  
150X150

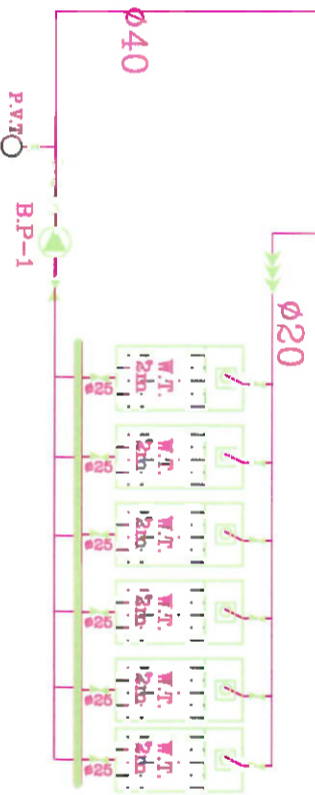
W.C MEN

W.C WOMEN

Magazine Room

FROM MAIN W.P.  $\phi$ 20mm  
1 WATER PIPE LINE



C.W.S  $\phi$  40mm



**PUMPS SCHEDULE**

	FLOW (lps)	HEAD (m)	QUANTITY		SYSTEM	DESIGNATION	ELECTRICAL POWER (kwh/ann./lpa)	ELEC. POWER W
			DUTY	STAND BY				
BOOSTER PUMP	3.28	5.20	1	-	1	DOMESTIC WATER	AT ROOF	300



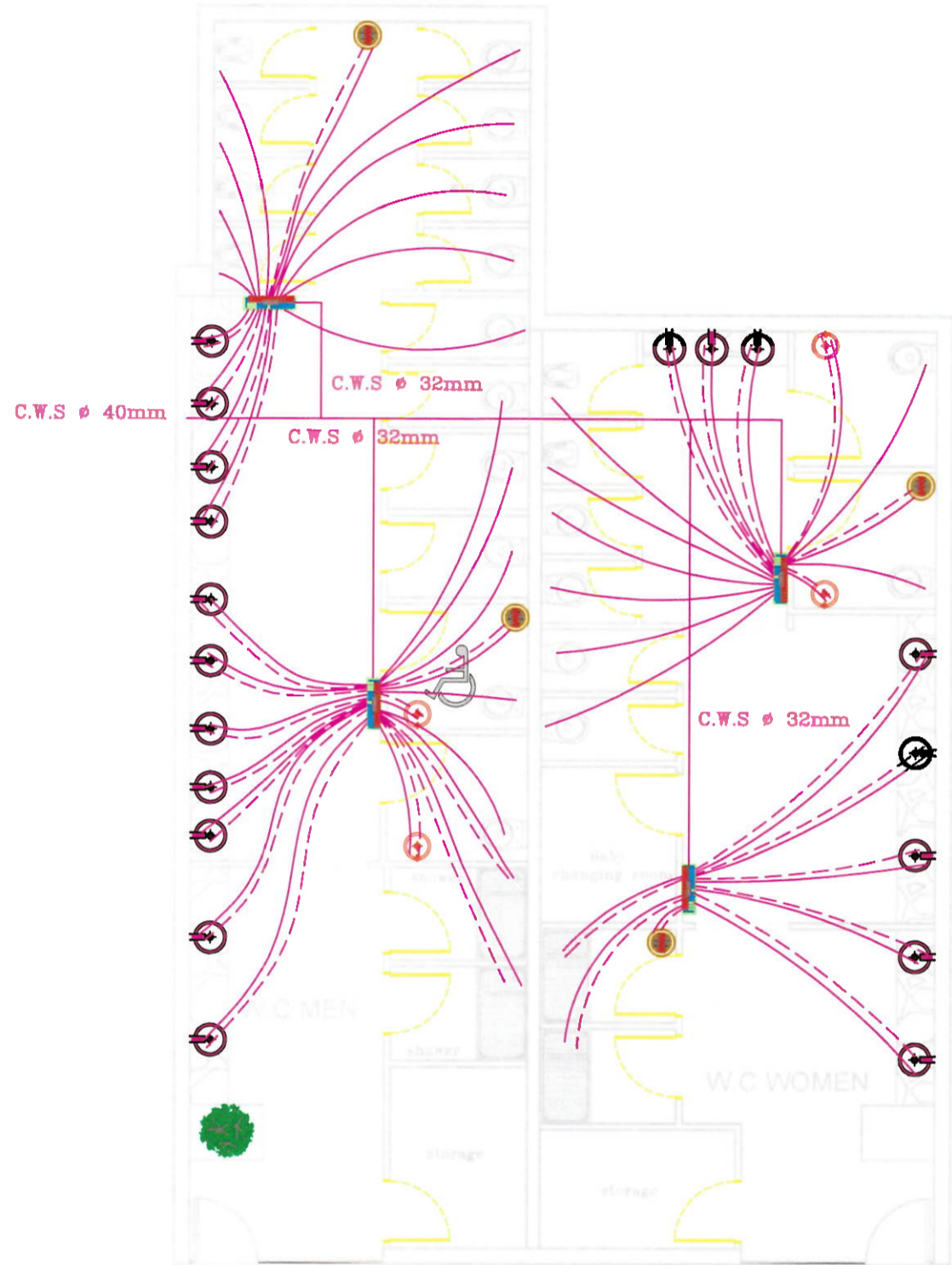
	W-CAB 80X60cm
	E.W.H. 80 LT

**Branches Diameter**

Fixture	Diameter	Pipe Material
Bath	20mm	Plastic Pex
W.C.	16mm	Plastic Pex
Bidet	16mm	Plastic Pex
Basin	16mm	Plastic Pex
Sink	20mm	Plastic Pex
BathTub	16mm	Plastic Pex
Shower	16mm	Plastic Pex

**Cabinet C&HWS Diameters**

Cabinets	CWS	HWE	Pipe Material
MAIN	40mm	20mm	CPVC
DCB.	40mm	20mm	CPVC



ø110mm U.P.V.C  
D.P.D. & V.P. UP.

ø110mm U.P.V.C  
V.P. UP.

ø110mm U.P.V.C  
V.P. UP.

ø110mm U.P.V.C  
D.P.D. & V.P. UP.

ø110mm U.P.V.C  
D.P.D. & V.P. UP.

ø110mm U.P.V.C  
D.P.D. & V.P. UP.

slope 0.50 %

slope 0.50 %

slope 0.50 %

slope 0.50 %

slope 0.50 %

slope 0.50 %

ø110mm U.P.V.C  
R.W.P.

ø110mm U.P.V.C  
R.W.P.

